



THE UNIVERSITY OF
AUCKLAND
Te Whare Wānanga o Tamaki Makaurau
NEW ZEALAND

Milk POWDER

Oscar Dowson

o.dowson@auckland.ac.nz

Andy Philpott, Andrew Mason, Anthony Downward











In my opinion,
all palm oil
should be banned.

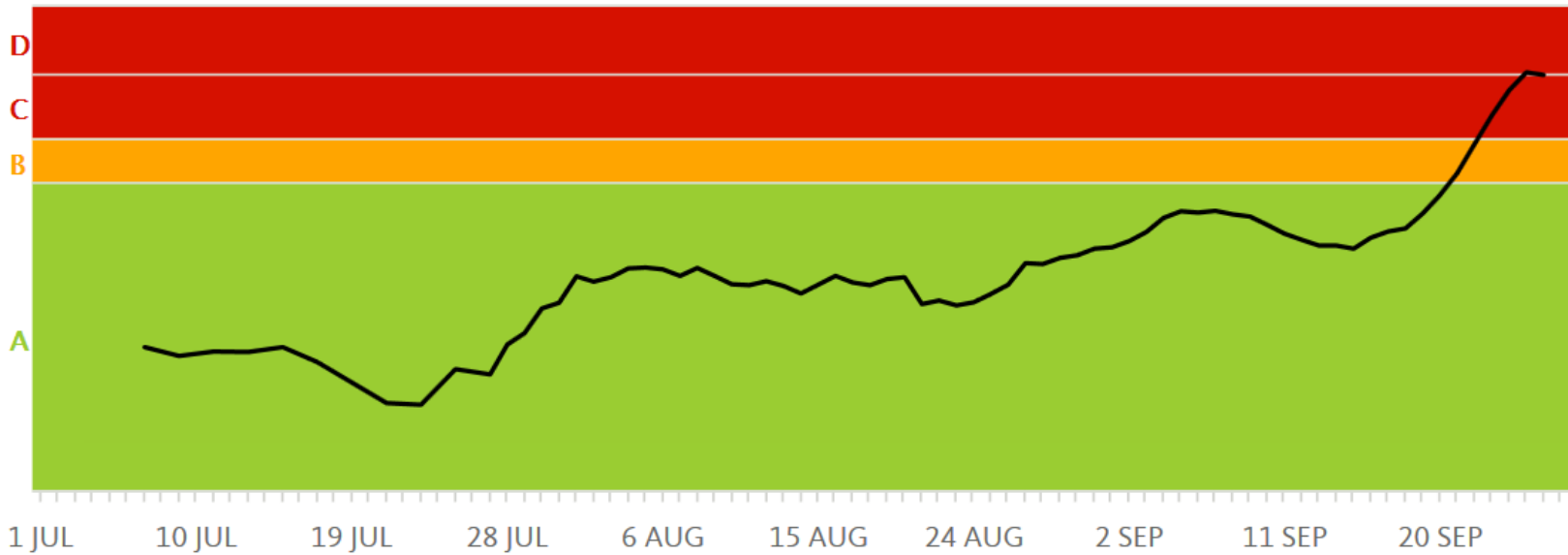


01/07/17 - 27/09/17 ▼

2017/18 ▼

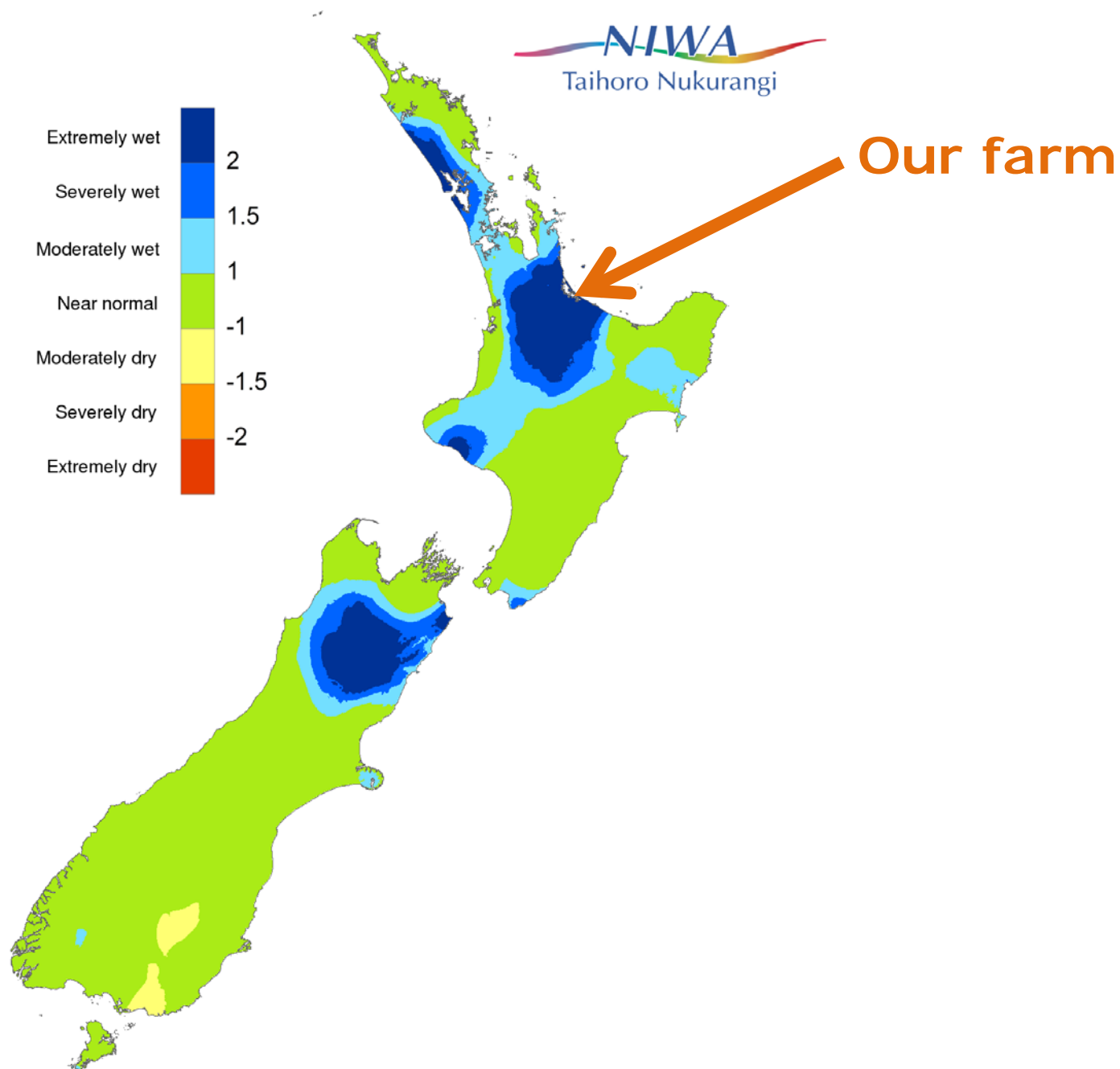
[Last 10 Days](#)

FEI : This Season



- ☐ Kg/
- ☐ Litr
- ☐ SC
- ☐ Kg/
- ☐ Fat
- ☐ Mil
- ☐ Pro
- ☒ FEI

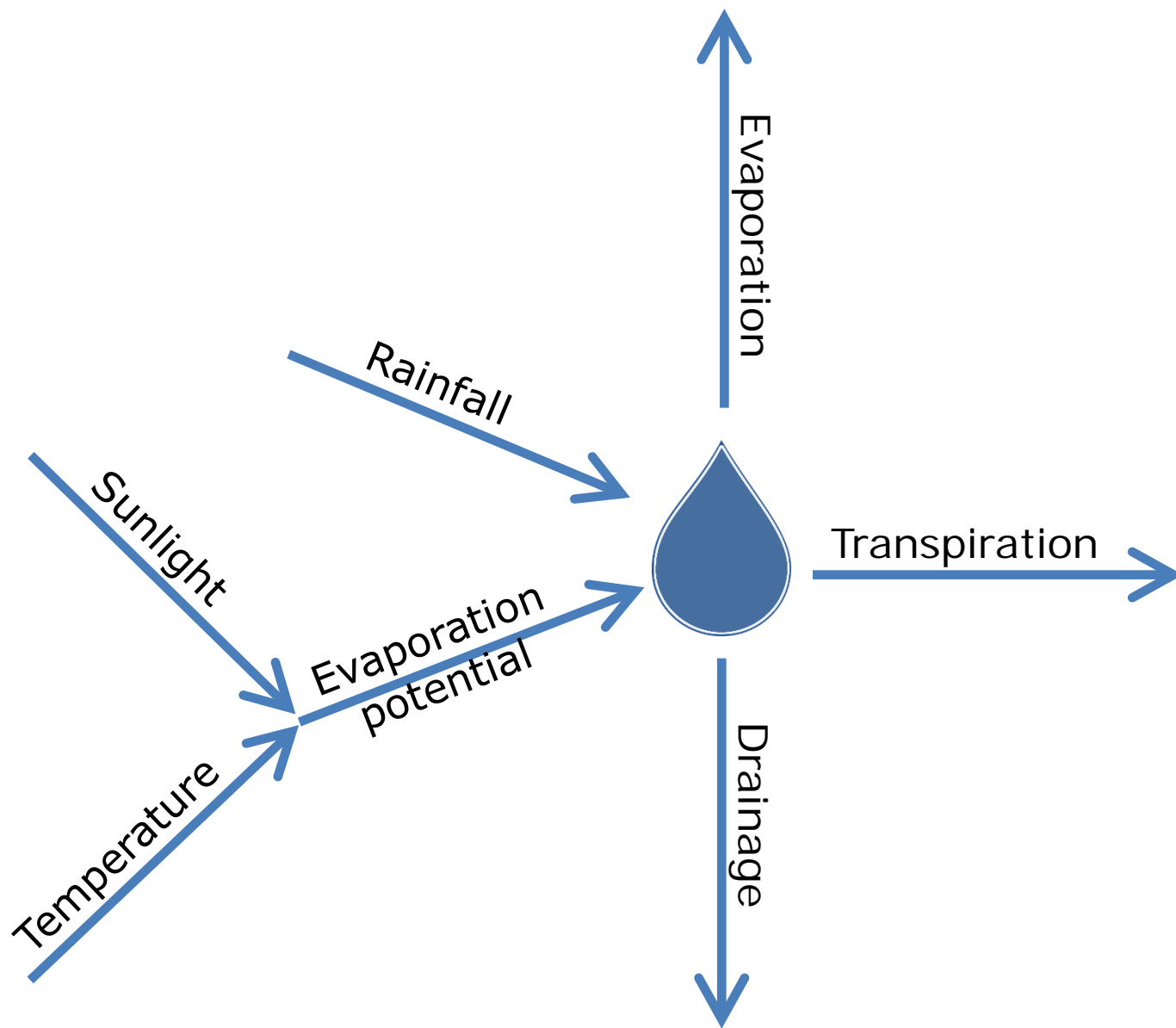
SPI Drought Index for 9am 27/08/2017 to 9am 26/09/2017

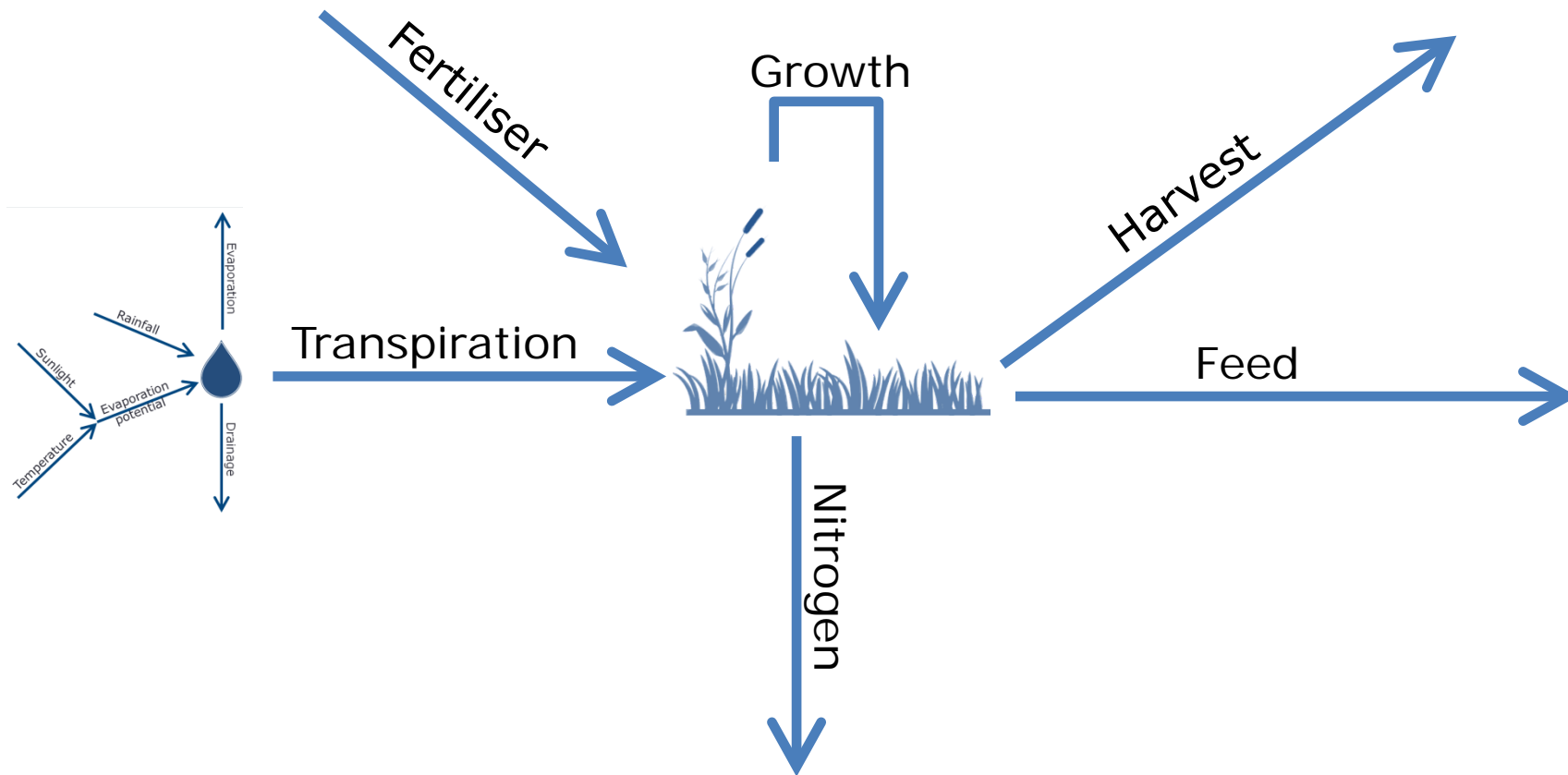


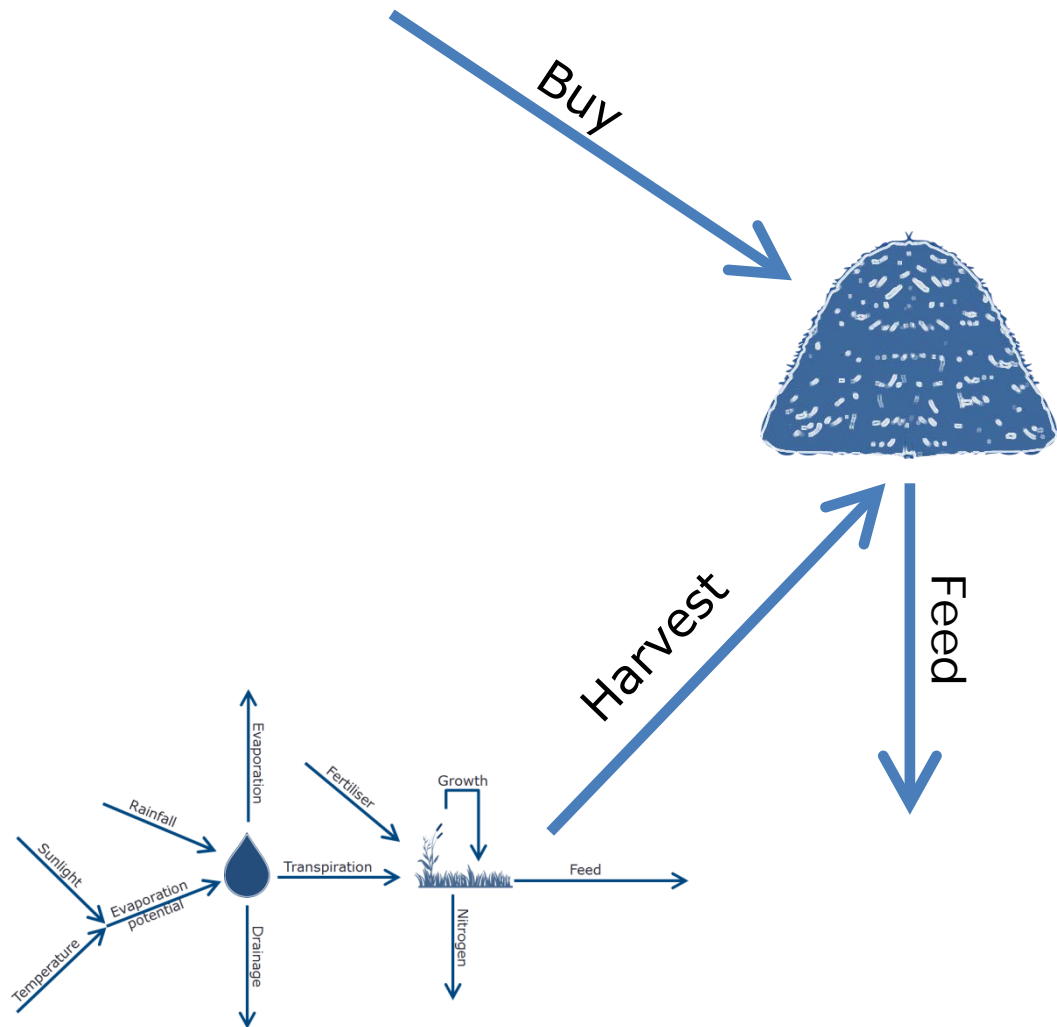
What went wrong?

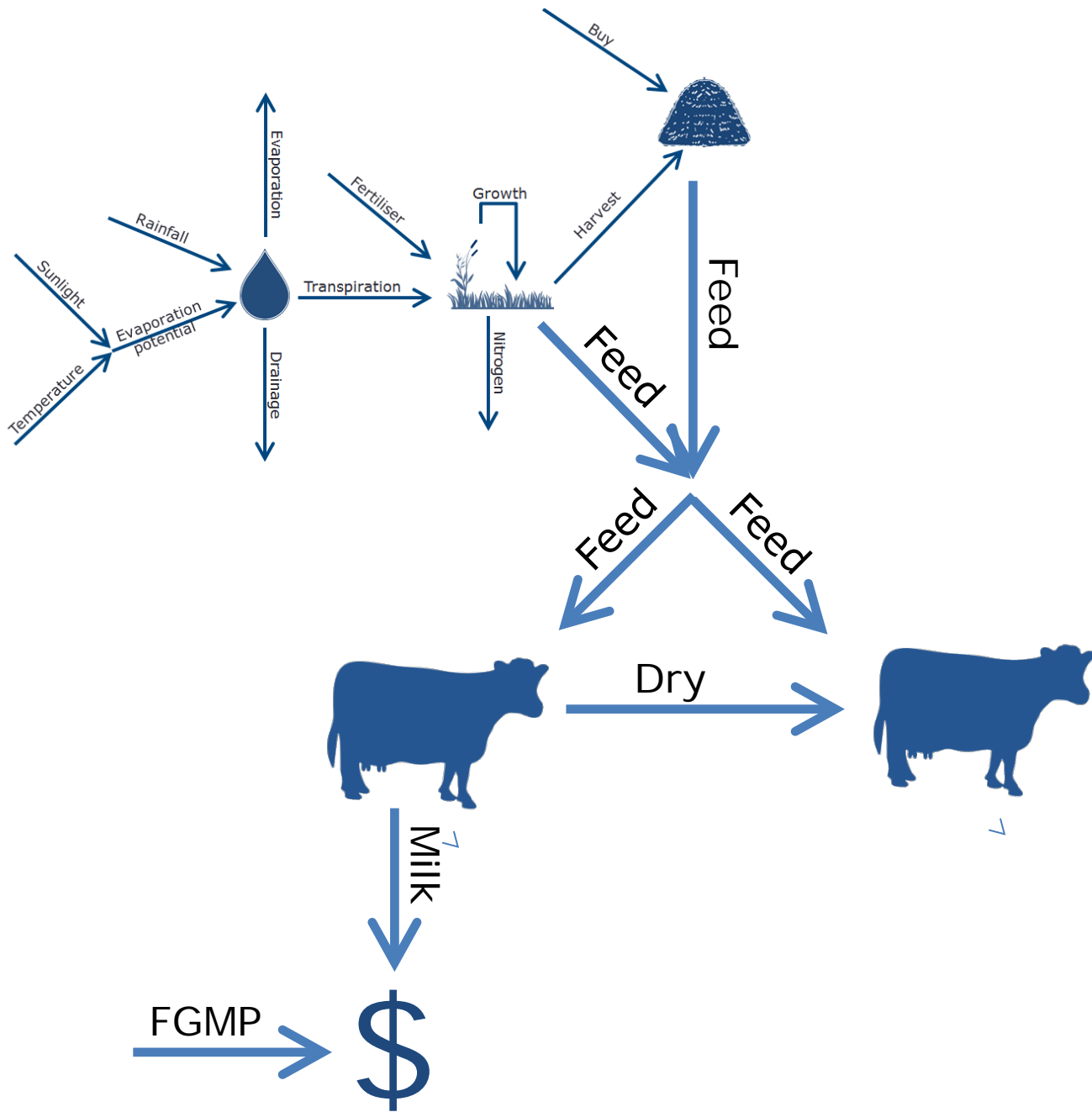
- Good payout forecast
- So maintained high stocking rate
- Reasonable feed stocks on hand so didn't buy more
- Wet year (2x avg. rainfall) left paddocks damaged
- Experience said: can't have bad Summer, Autumn, Winter AND Spring right... the sun will come
- Farm consultant's advice: "don't blink"

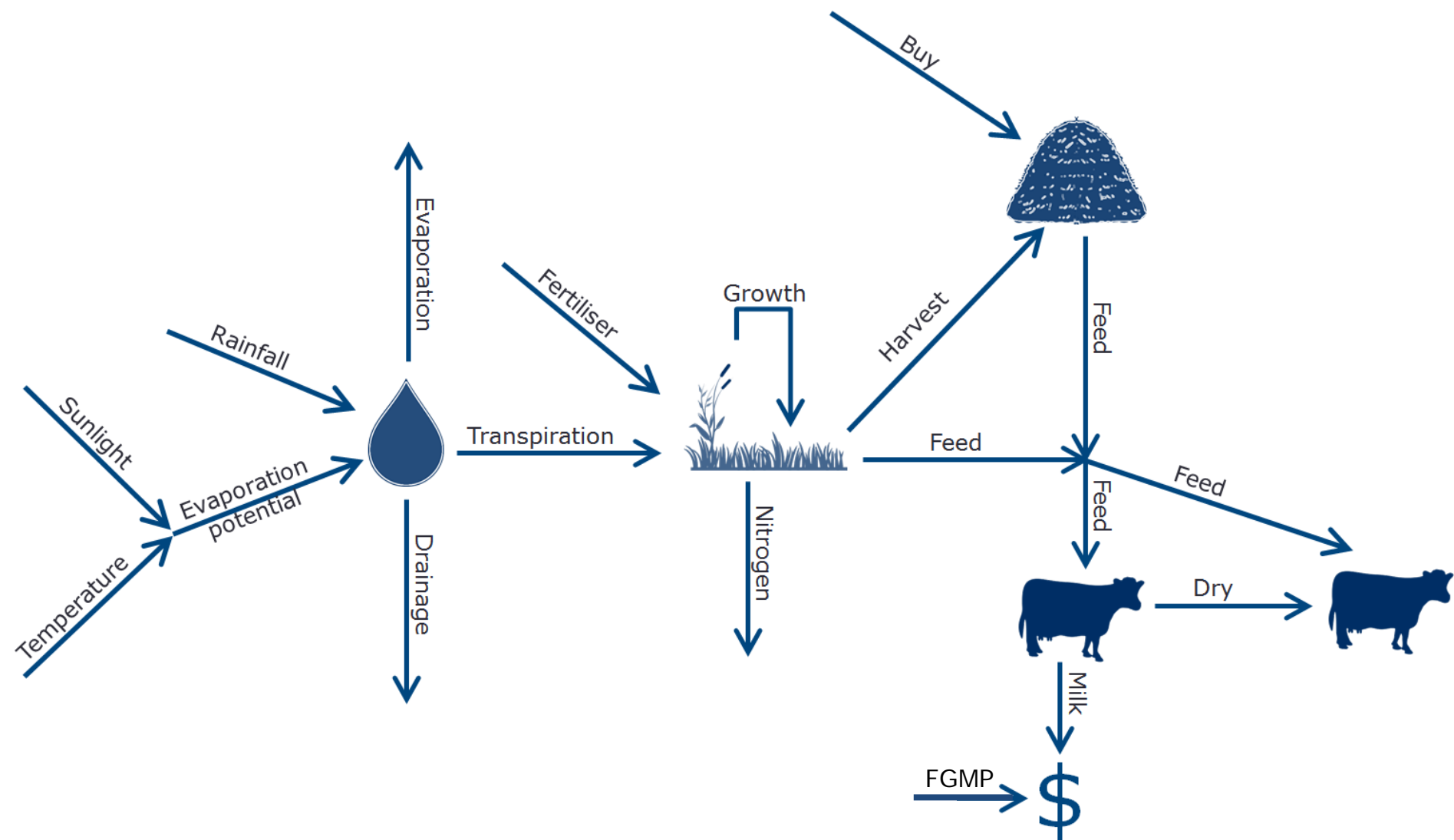
The **Milk**
Production
Optimiser incorporating
Weather
Dynamics and
Economic
Risk

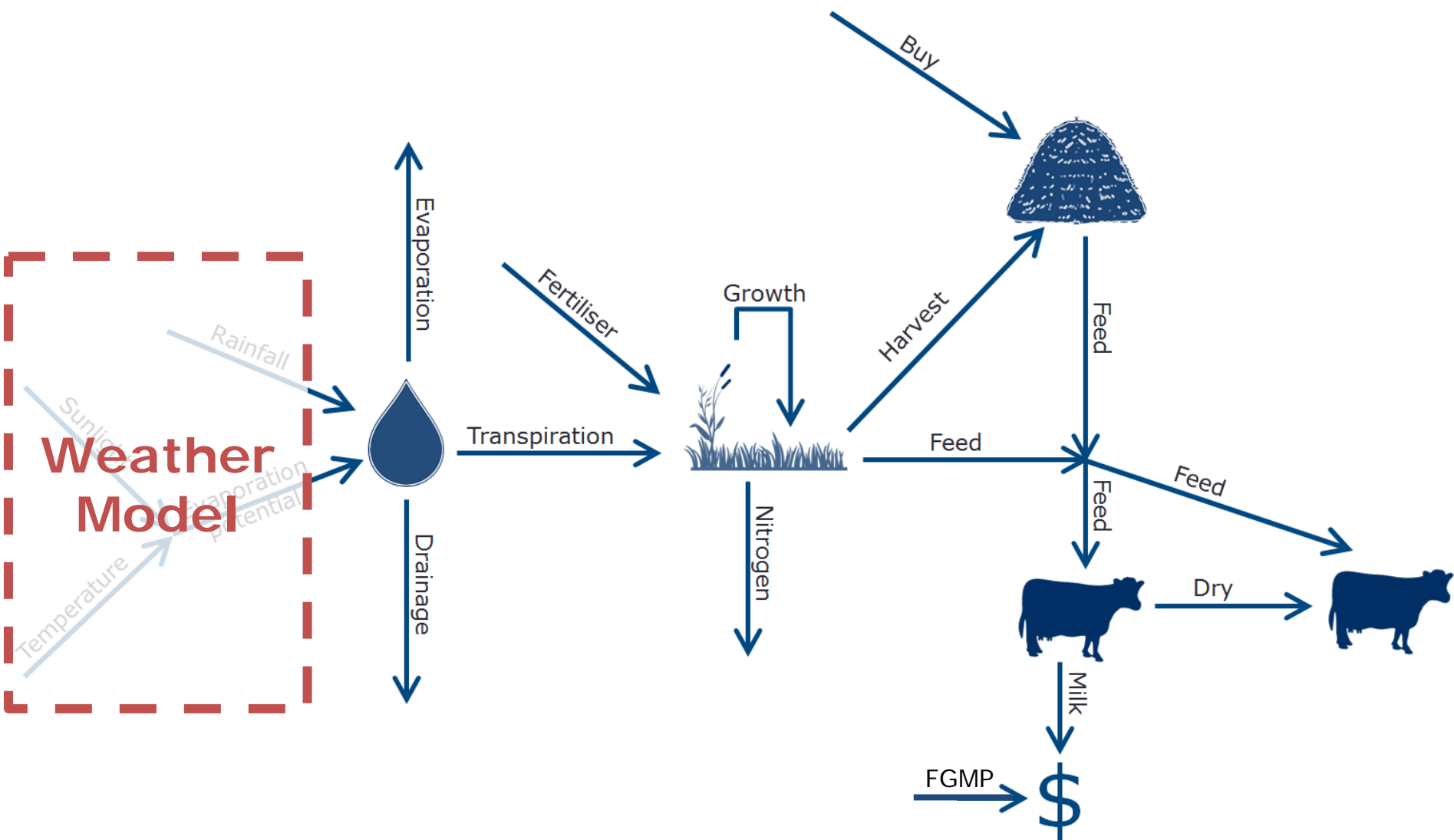


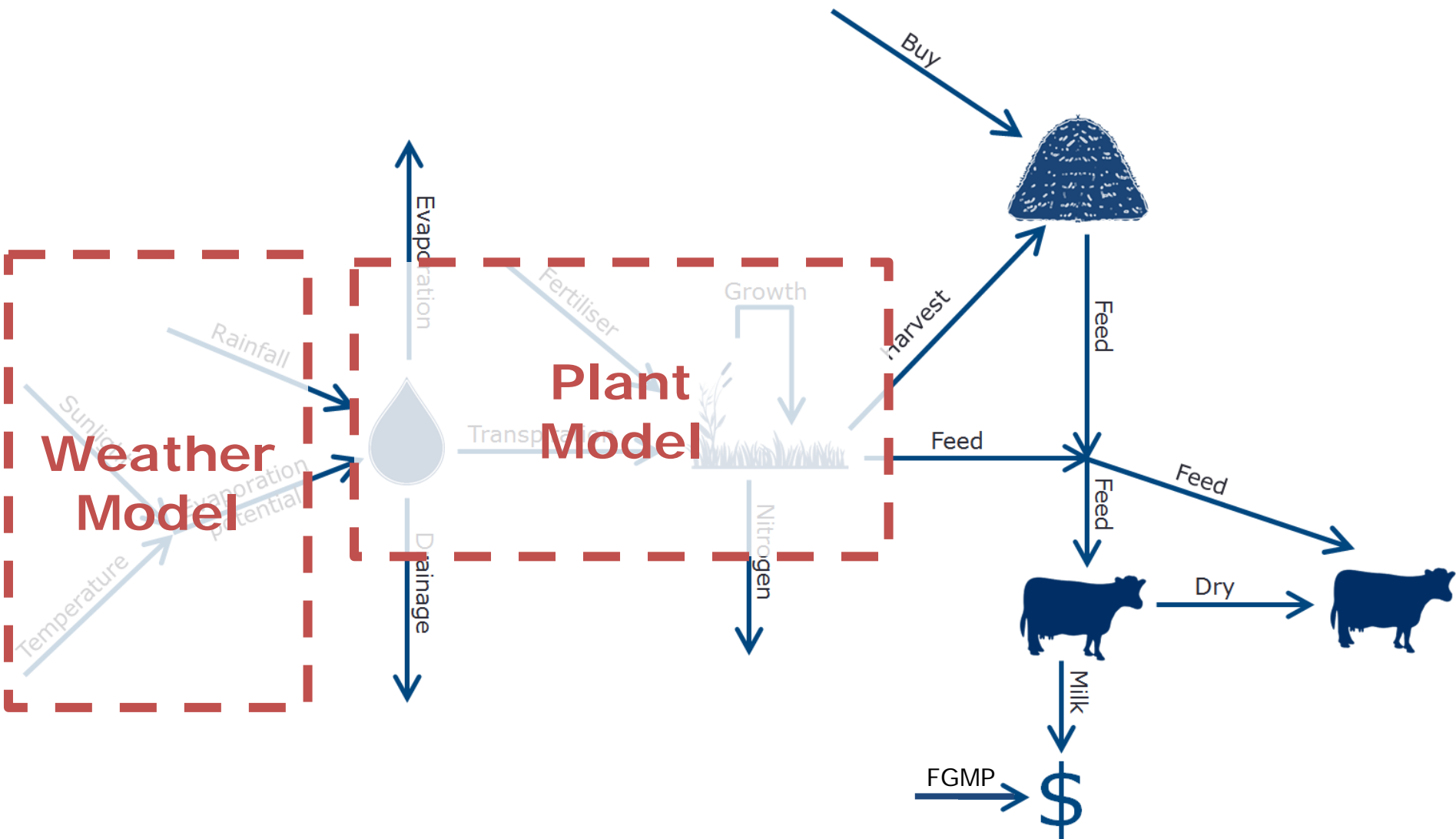


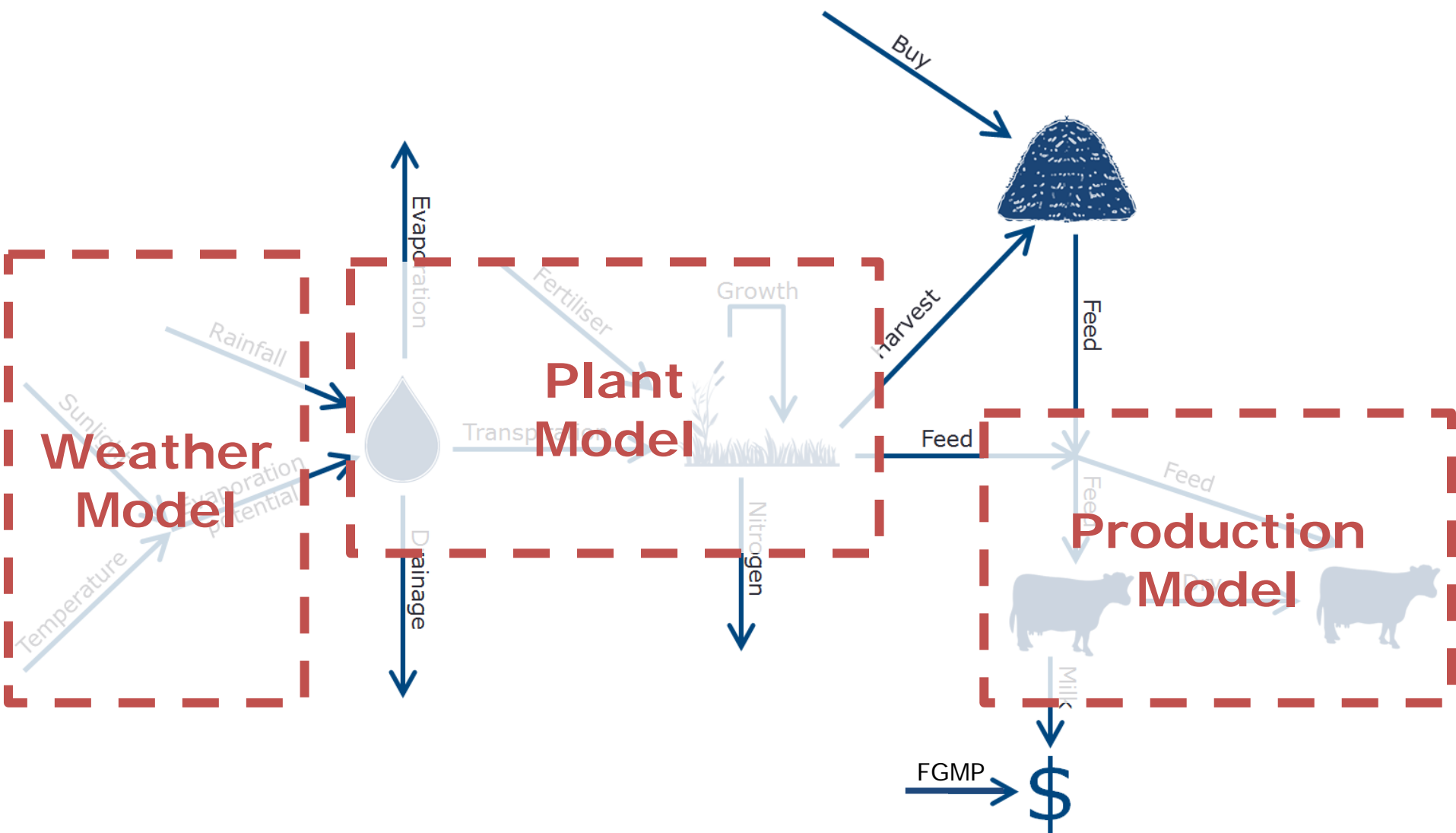


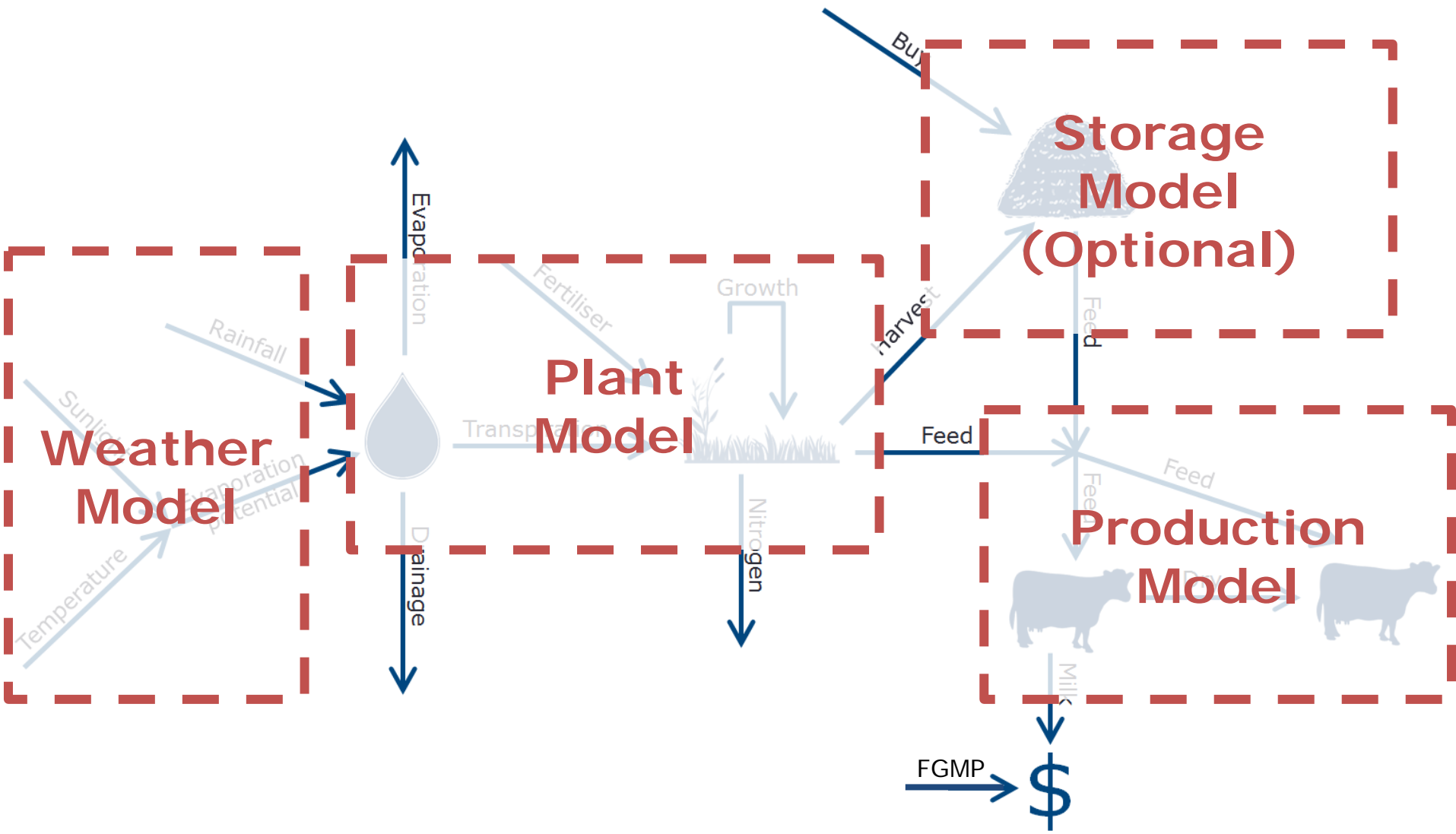


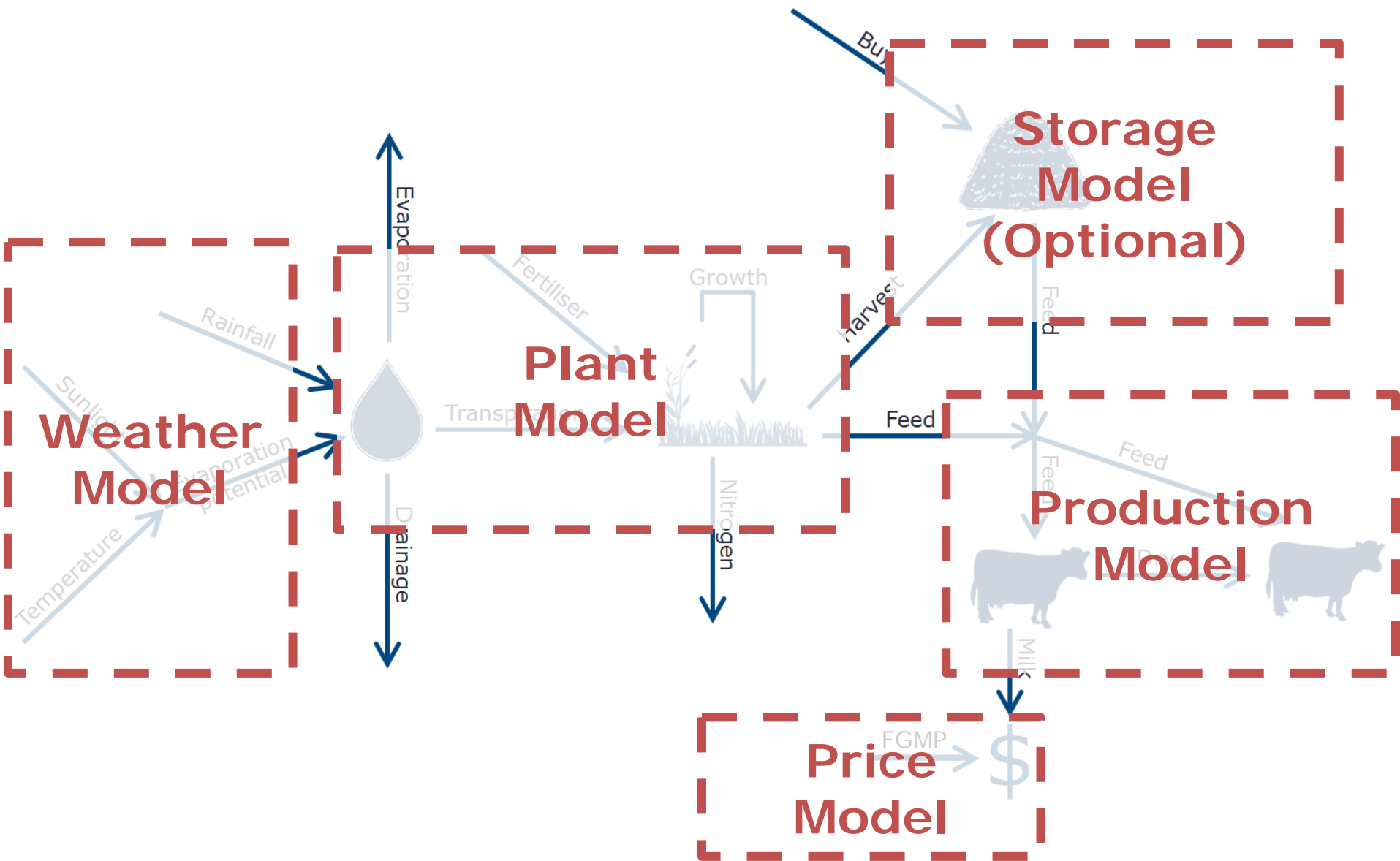








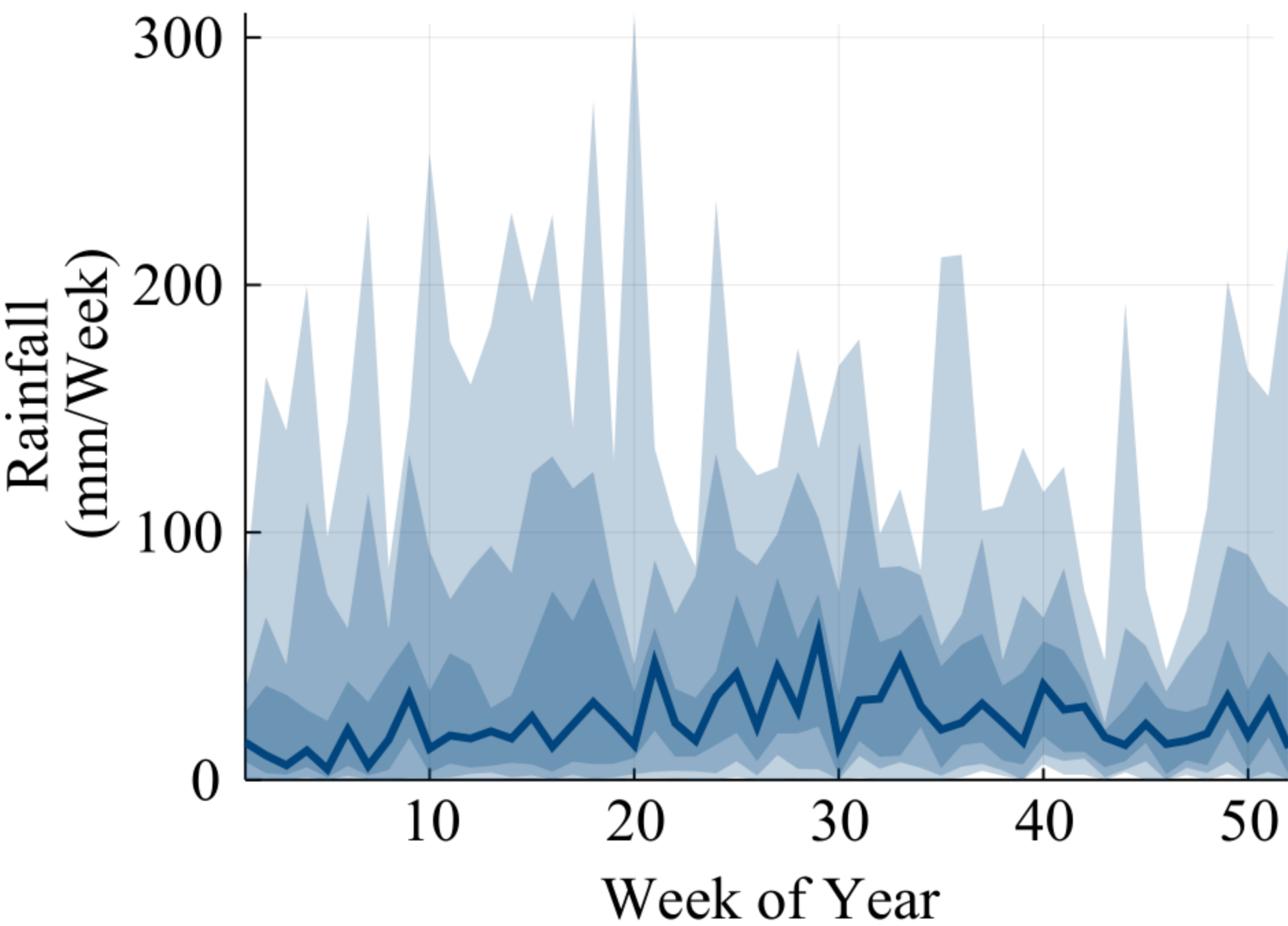


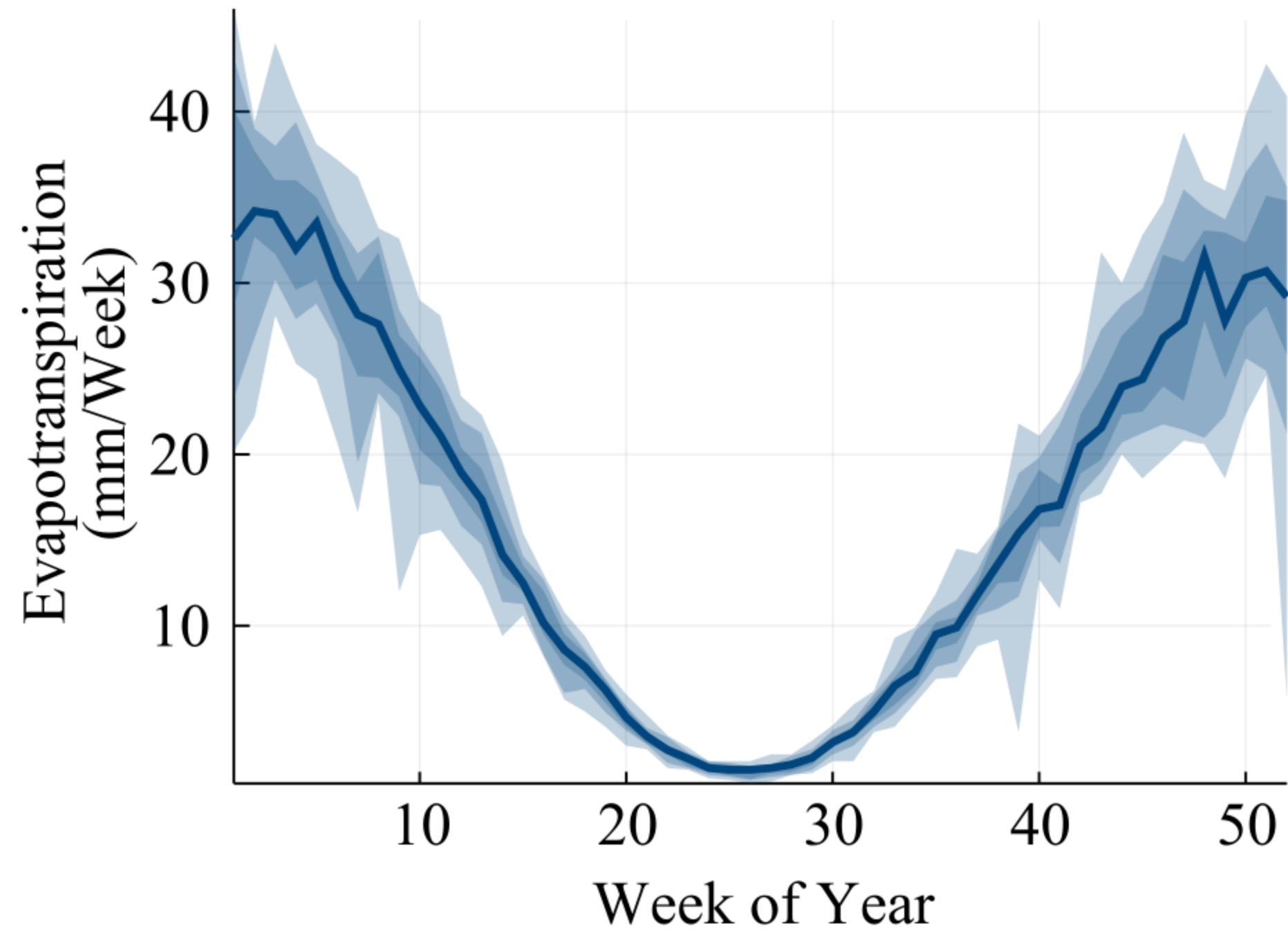


DOWSON-FARMS

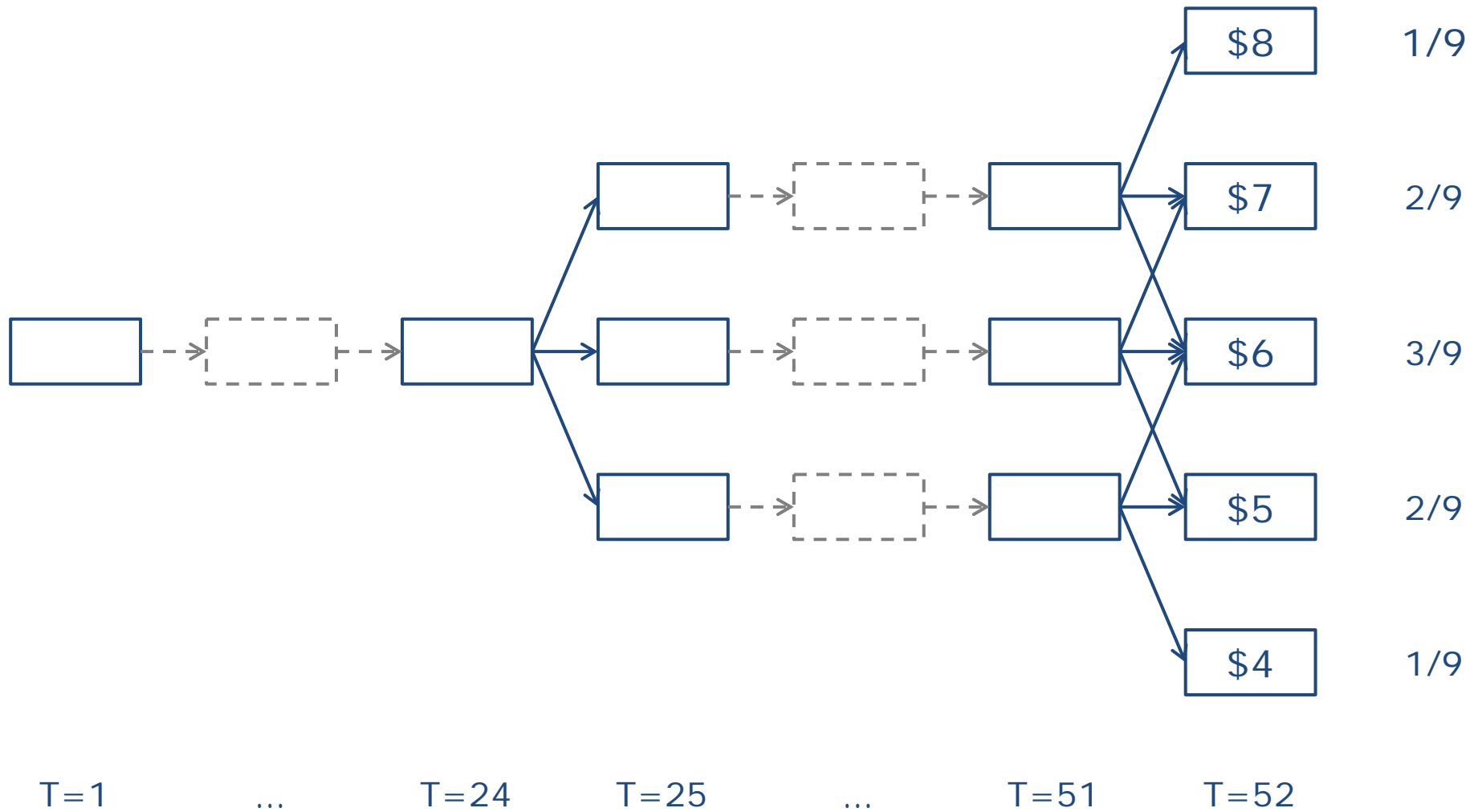
A CASE STUDY

HISTORICAL WEATHER DATA

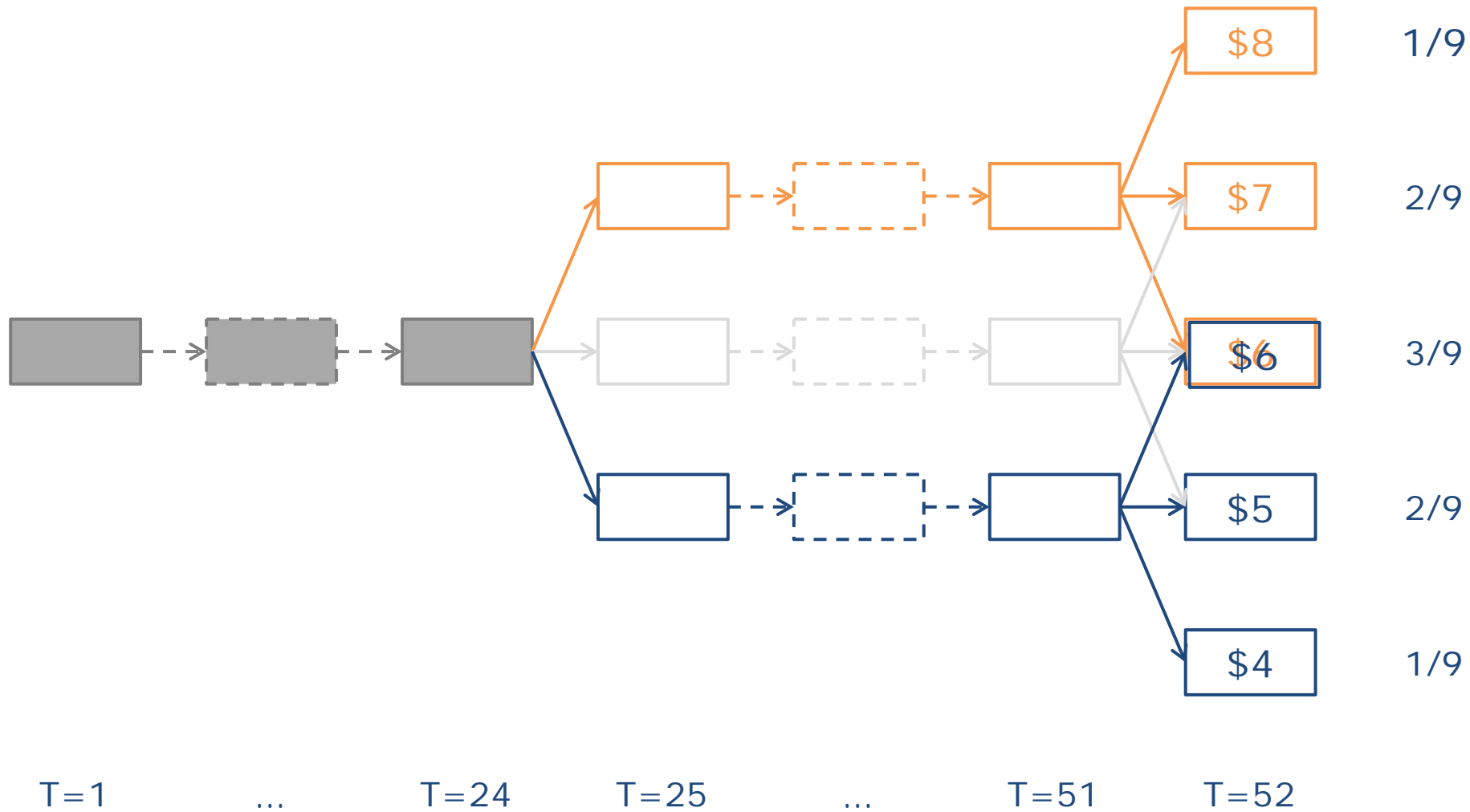




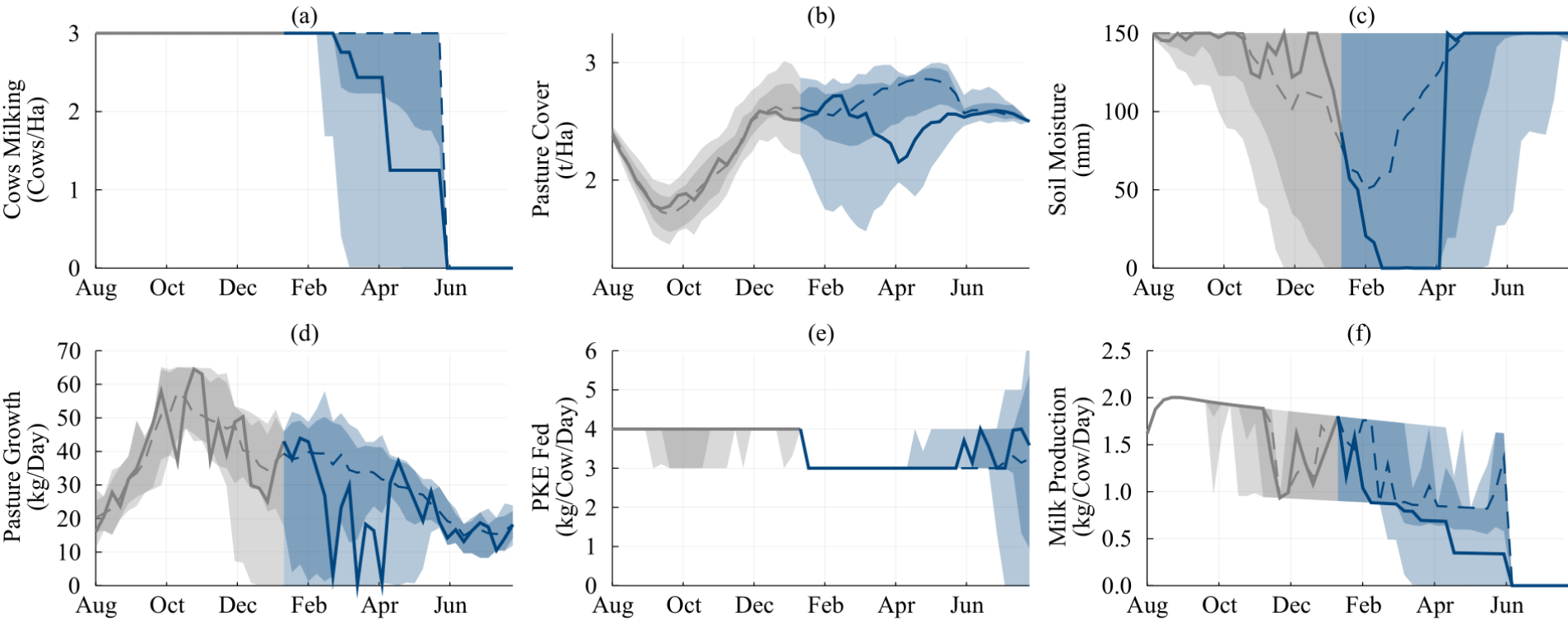
FORECASTING THE MILK PRICE



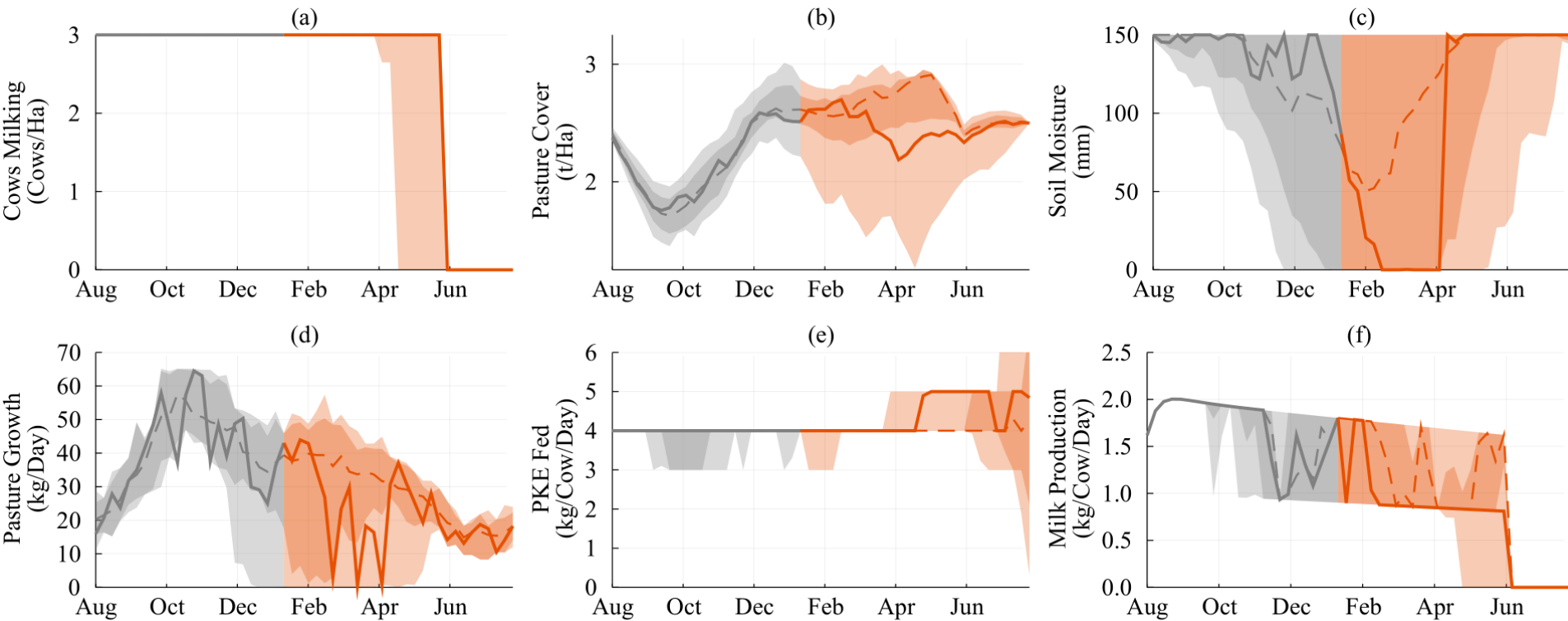
RESULTS



Low Price Scenarios

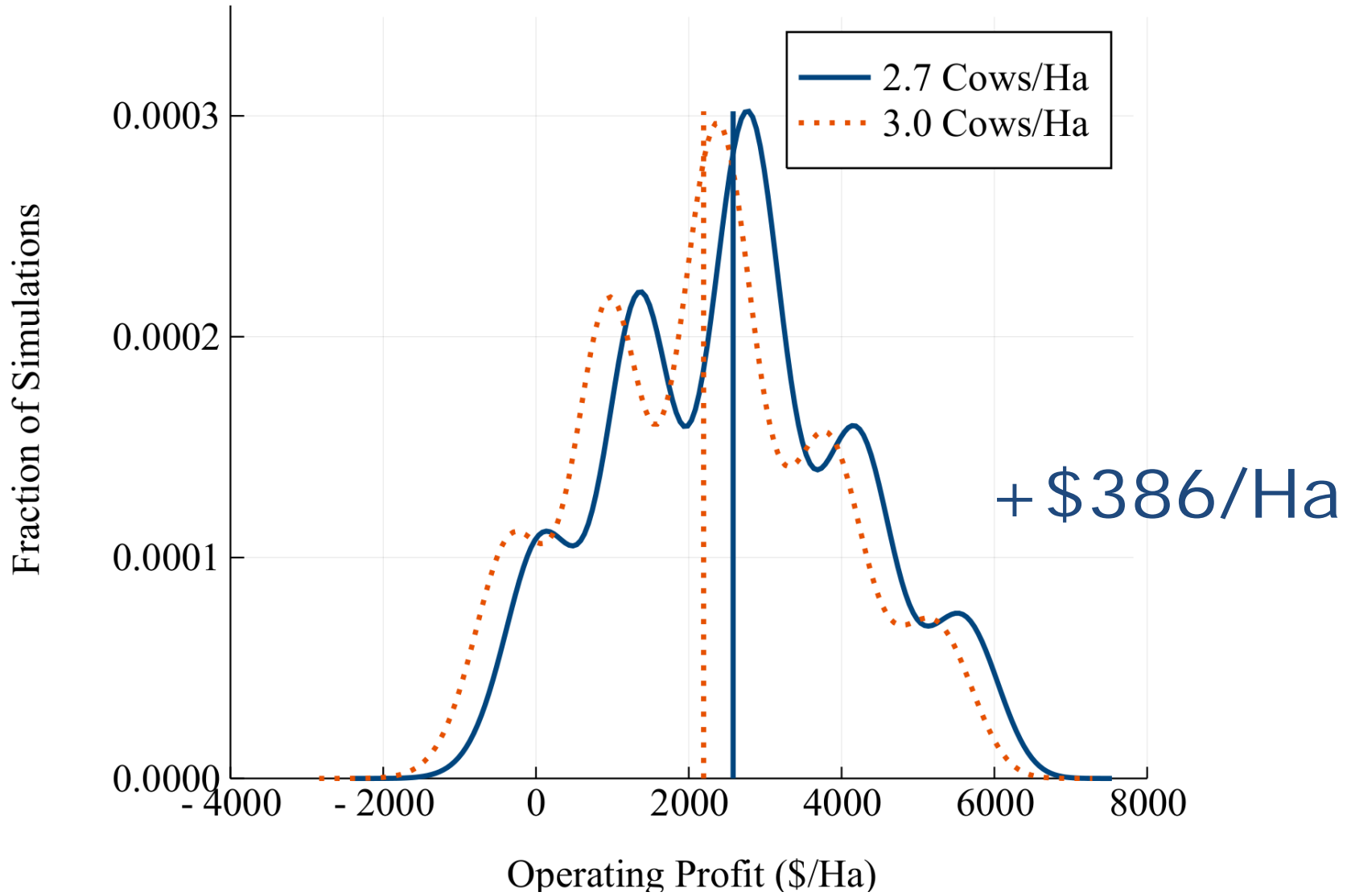


High Price Scenarios



CAN WE DO BETTER?

Lowering the Stocking Rate



What next?

- A better price model
- A better weather model
- A better animal model
- Milk Price Futures
- Nitrogen
- Ability to sell/buy stock
- Sheep and Beef?
- Cropping?

